



REPORT NO. 1091

Cryptosporidium and Giardia
(Round 41)
Proficiency Testing Program

August 2018

ACKNOWLEDGMENTS

PTA wishes to gratefully acknowledge the technical assistance provided for this program by J Smith. This assistance included providing input into the design of the program, the supply of an alternative background matrix and the technical commentary for the report. Further appreciation is extended to Ms C Devoy and the staff at BTF Pty Ltd for sample preparation, distribution and homogeneity testing.

© COPYRIGHT PROFICIENCY TESTING AUSTRALIA 2018

PO Box 7507, SILVERWATER NSW 2128, Australia



CONTENTS

	PAGE(S)
1. FOREWORD	1
2. FEATURES OF THE PROGRAM	1
3. DESIGN OF THE PROGRAM	2
TABLE A: Round 41 Sample Design	2
Sample preparation	2
Confounding materials	3
Quality assurance of DWPFBW	3
4. FORMAT OF APPENDICES	3
5. FALSE RESULTS	4
6. LOW/HIGH RECOVERIES	4
7. PTA AND TECHNICAL ADVISER'S COMMENTS	4
Percentage Recovery Rate	4
Impact of Matrix	5
Impact of Reference Count	5
Confirmation	6
Figure 1A: Comparison of total average recovery rates for <i>Cryptosporidium</i>	7
Figure 1B: Comparison of total average recovery rates for <i>Giardia</i>	7
Figure 2A: Reference Counts vs % Recovery for <i>Cryptosporidium</i>	8
Figure 2B: Added Matrix vs % Recovery for <i>Cryptosporidium</i>	8
Figure 2C: Reference Count/Matrix vs % Recovery for <i>Cryptosporidium</i>	8
Figure 3A: Reference Counts vs % Recovery for <i>Giardia</i>	9
Figure 3B: Added Matrix vs % Recovery for <i>Giardia</i>	9
Figure 3C: Reference Count/Matrix vs % Recovery for <i>Giardia</i>	9
Measurement Uncertainty (MU) Estimation	10
TABLE B: <i>Cryptosporidium</i> and <i>Giardia</i> Round 41 Recovery - Measurement Uncertainty	10
TABLE C: Comparison of <i>Cryptosporidium</i> Oocyst Levels for Each Round	11
TABLE D: Comparison of <i>Giardia</i> Cyst Levels for Each Round	12
Method Commentary	12
TABLE E: Recovery and recovery variability by bulk water concentration method	13
Overall Laboratory Performance	14
Measurement Uncertainty (MU)	15
TABLE F: Overall Laboratory Performance	16
Conclusions	20
8. REFERENCES	20
APPENDIX A	
Summary of Results	A1.1
Summary of Percentage Recovery Rates and Charts	A1.6
APPENDIX B	
Homogeneity Testing and Trip Control	B1.1
TABLE G: Relative Standard Deviation for Various Sample Doses (Round 41)	B1.1
Trip Control	B1.2
APPENDIX C	
Instructions to Participants	C1.1
Results Sheet	C1.3
GLOSSARY	

1. **FOREWORD**

This report summarises the results of the forty-first round of a planned series of proficiency testing rounds involving the analysis of water samples for the detection and enumeration of *Cryptosporidium* and *Giardia*. This program is accredited to ISO/IEC 17043:2010 “*Conformity assessment - General requirements for proficiency testing*” by International Accreditation New Zealand (IANZ).

The proficiency round was conducted in May 2018 by Proficiency Testing Australia (PTA). The Technical Adviser was J Smith. The Program Coordinator was Mrs Y Christie. This report was authorised by Mrs K Cividin, PTA Quality Manager.

The program aim was to assess laboratories’ ability to competently detect and report levels of *Cryptosporidium* and *Giardia* (oo)cysts in water.

2. **FEATURES OF THE PROGRAM**

- (a) A total of twelve laboratories (three from Australia, two from New Zealand, and seven from Colombia) received samples, of which all returned results for inclusion in the report.
- (b) Participating laboratories were requested to report both total and confirmed count results. Participants were also requested to calculate and report an estimate of measurement uncertainty (MU) for each reported result.
- (c) Results as reported by participants are presented in Appendix A.
- (d) In addition to the samples, laboratories were provided with the *Instructions to Participants* and a *Results Sheet* (see Appendix C). Laboratories were instructed to perform the tests according to their routine methods (method most frequently employed). Laboratories were reminded that PTA is aware of the internal positive control ColorSeed™, developed by BTF Pty Ltd. Although PTA can see the advantage of ColorSeed™ as an internal positive control, participants were instructed to note that it is not acceptable for laboratories to adjust results obtained with the PTA proficiency testing samples on the basis of recoveries obtained using ColorSeed™. An exception to this would be if the respective laboratory’s routine practice/standard operating procedure routinely uses ColorSeed™ as a true internal standard, i.e. addition to every sample, *and* correction of observed count using internal standard recovery during routine sample reporting.
- (e) The samples for Round 41 were produced in line with EasySeed™ batch number 631, which are certified reference samples. The preparation of these certified reference samples is considered to have satisfied the homogeneity testing requirements (see Appendix B).
- (f) Each laboratory was randomly allocated a unique code number for the round to ensure confidentiality of results. Reference to each laboratory in this report is by code number.

3. DESIGN OF THE PROGRAM

Participants were requested to provide quantitative results for the presence of *Cryptosporidium* and *Giardia* in five water concentrate samples. Sample design is presented below.

TABLE A: Round 41 Sample Design

Sample	<u>Cryptosporidium</u> (Count)	<u>Giardia</u> (Count)	<i>Amount of DWPFBW added</i>
A	70	60	100 µL
B	110	0	250 µL
C	80	80	150 µL
D	0	50	50 µL
E	160	140	500 µL
F (Trip control)	80	60	150 µL

Notes for Table A:

1. Drinking Water Plant Filter Backwash (DWPFBW) was added to samples to simulate an environmental sample.
2. One nominated laboratory (Code 3) was provided with F, as trip control.

All samples were added to Milli-Q™ water to make a final volume of approximately 3.5 mL.

Sample preparation

BTF Pty Ltd, NSW, prepared different water concentrate samples for this program, using PTA in-house method *PTPM 11.1 Sample Preparation – Cryptosporidium and Giardia (Version No. 6)*.

Seed samples were prepared on 26 April 2018. Seed samples were dispensed in IsoFlow™ and the sterilisation method was gamma irradiation.

Cryptosporidium parvum (Iowa strain) oocysts were of bovine origin, excreted on 13 April 2018. Oocysts were purified by discontinuous sucrose and caesium chloride gradient centrifugation.

Giardia lamblia (H3 strain) cysts were obtained from experimentally-infected gerbils and were excreted on 11 April 2018. Cysts were purified by sucrose and Percoll™ density gradient centrifugation, followed by water washes.

The seed samples were prepared using flow cytometry and an automated dispensing method. *Cryptosporidium* and *Giardia* (suspended in IsoFlow™ solution) were dispensed into 4 mL tubes.

Seed samples were then sealed, labelled and exposed to a controlled dose of gamma irradiation. The *Cryptosporidium* oocysts were also heat treated to prevent excystation. Quality Control was performed on the seed samples.

On 26 April each of the seed samples were spiked with DWPFBW (see 'Confounding materials' below) and then made up to approximately 3.5 mL with Milli-Q™ water to produce the water concentrate samples sent to participants on 14 May 2018.

Participating laboratories were asked to add each of the water concentrate samples to 10 L of water of their choice prior to analysis. The laboratories were also instructed to take care to ensure that the water used did not contain any cysts or oocysts and could, for example, use reverse osmosis or membrane filtered (suggested pore size $\leq 45 \mu\text{m}$) water.

Confounding materials

Drinking Water Plant Filter Backwash (DWPFBW) was added to selected water concentrate samples at a concentration of 50, 100, 150, 250 or 500 μL per water concentrate sample (see Table A).

Quality assurance of DWPFBW

To ensure the DWPFBW did not contain *Cryptosporidium* oocysts or *Giardia* cysts, DWPFBW samples were analysed prior to addition to proficiency samples (2 ml packed pellet analysed by IMS-IFA in 0.5 mL aliquots), and particulates characterised and quantified using microscopic particulate analysis (USEPA 1996.)

4. FORMAT OF APPENDICES

Appendix A (A1.1 - A1.5) contains the total count and confirmed count results reported by participating laboratories for each of the five water concentrate samples. Percentage recovery rates and charts are also presented (A1.6 - A1.11). Please note that recovery rates are calculated using total counts only.

Appendix B contains details of homogeneity testing, quality control and trip control results (B1.1 - B1.2). Appendix C contains the *Instructions to Participants* and the *Results Sheet* (C1.1 – C1.3).

5. **FALSE RESULTS**

Results were examined for false positive and false negative results with all testing methods pooled. Three participating laboratories (laboratory codes 4, 5 and 12) received false positive results for the analysis of *Cryptosporidium* in PTA Sample D. Two participating laboratories (laboratory codes 2 and 5) received false positive results for the analysis of *Giardia* in PTA Sample B.

6. **LOW/HIGH RECOVERIES**

The acceptable range set for this program is a recovery between 10-110%. This has been determined to be an appropriate acceptability range by technical experts in this area of testing. The results were examined for low/high recoveries (recovery rates that lie outside the acceptable range of 10-110%) with all testing methods pooled.

One result was outside the acceptable recovery range (laboratory code 12 PTA Sample D).

7. **PTA AND TECHNICAL ADVISER'S COMMENTS**

A total of 107 Total Count results were received for this program.

Percentage Recovery Rate

- Pooled data indicated a higher range of recoveries (within the acceptable recovery rate limit range of 10% - 110% for *Giardia* (18-86%) compared to *Cryptosporidium* (15-84%), which is the same as what was seen when reviewing respective ranges observed in round 40 (*Cryptosporidium* [24-72%]; *Giardia* [18-79%]).

Overall results are typical of recoveries obtained using the methods employed.

- Recovery range: Pooled round 41 laboratory data indicated a larger range of recoveries for both *Cryptosporidium* (15-84%) and for *Giardia* (18-118%) compared to round 40 (24-72% *Cryptosporidium*, 18-79% *Giardia*).
- Recovery variability:
 - Intra-sample*: The greatest recovery variability for *Cryptosporidium* occurred for sample C (150 µL matrix, 80 *Cryptosporidium* oocysts, 80 *Giardia* cysts; MU = 47%), while the greatest recovery variability for *Giardia* occurred for sample D (50 µL matrix, 50 *Giardia* oocysts; MU = 68%). The least recovery variability for *Cryptosporidium* occurred for sample B (250 µL matrix, 110 *Cryptosporidium* oocysts; MU = 34%), while least recovery variability for *Giardia* occurred for sample A (100 µL matrix, 60 *Giardia* oocysts; MU = 36%).

-Intra-laboratory: Laboratory codes 1 and 4 had the greatest *Cryptosporidium* and *Giardia* recovery variability (33%, 35% RSD, respectively). Laboratory codes 5 and 6 had the least *Cryptosporidium* and *Giardia* recovery variabilities (5%, 6% RSD, respectively).

- Recovery medians: Median recoveries were generally similar to those reported for other proficiency schemes and published literature (47-63% *Cryptosporidium*; 42-54% *Giardia*).
- Recovery maxima: Maximum recoveries (within the acceptable recovery rate limit range 10% - 110%) were higher for *Cryptosporidium* (75-84%) and *Giardia* (75-86%) than those in PTA round 40 (*Cryptosporidium* 58-72%; *Giardia* 70-79%).
- Recovery minima: Minimum recoveries (above the acceptable recovery rate limit 10%) were similar, but more variable for *Cryptosporidium* (15-30%) and *Giardia* (18-27%) than those in PTA round 40 (*Cryptosporidium* 24-26%; *Giardia* 9-35%).
- Control Samples: Counts of trip control samples (F_T) were identical to those of the sample kept on premises (F_{NoT}) for *Cryptosporidium* but higher for *Giardia* (B1.2). However, considering typical measurement uncertainties associated with analysis of these measurands, these recoveries were not significantly different (F_{NoT} and F_T ; B1.2). Control sample recoveries were also similar to their respective samples analysed by participant laboratories in terms of (oo)cysts per unit matrix; C for *Cryptosporidium* (controls 51%; participant laboratories median 50%) and A for *Giardia* (controls 50-57%; participant laboratories median 42%).

Impact of Matrix

- Considering test measurement uncertainty, median and average recoveries of *Cryptosporidium* and *Giardia* were generally similar regardless of matrix amount or type (A1.6, A1.9).
- Similar to rounds 39 and 40, lower mean *Cryptosporidium* recoveries were generally associated with lower matrix material levels (Fig. 2B). Lower matrix levels were generally associated with higher *Giardia* recoveries in rounds 39-40, but this effect was minimal in the present round (Fig. 3B).

Impact of Reference Count

- Lower mean *Cryptosporidium* reference counts (with the exception of sample D) and *Giardia* reference counts (with the exception of sample E) were generally associated with higher recoveries (Figs. 2A, 3A).
- With the exception of sample E, higher reference counts and *per-unit-matrix* produced higher (*Cryptosporidium*) mean (oo)cyst recoveries (Fig. 2C).

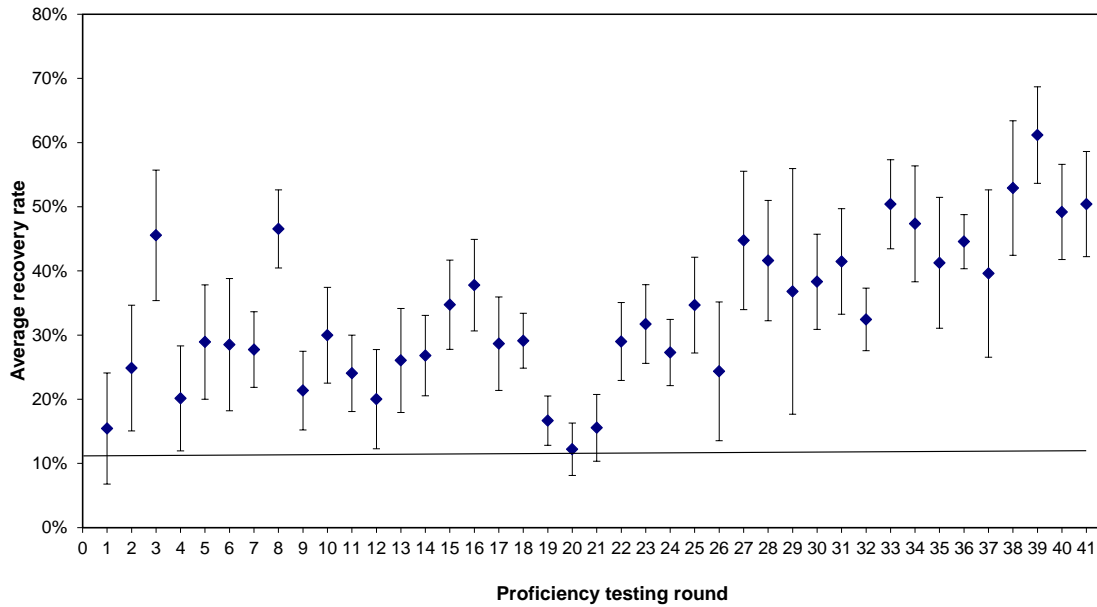
- With the exception of sample D, higher reference counts and *per-unit-matrix* produced higher (*Giardia*) mean (oo)cyst recoveries (Fig. 3C).

Confirmation

- Percent confirmed (DAPI[+]) *Cryptosporidium* oocysts in F_T and F_{NoT} samples (98% and 93% respectively) were similar to those of round 40 (96%). Percentages of DAPI(+) *Giardia* cysts in F_T and F_{NoT} samples (97% and 80%, respectively) were higher (and lower) than those of round 40 (86% and 87%, respectively).

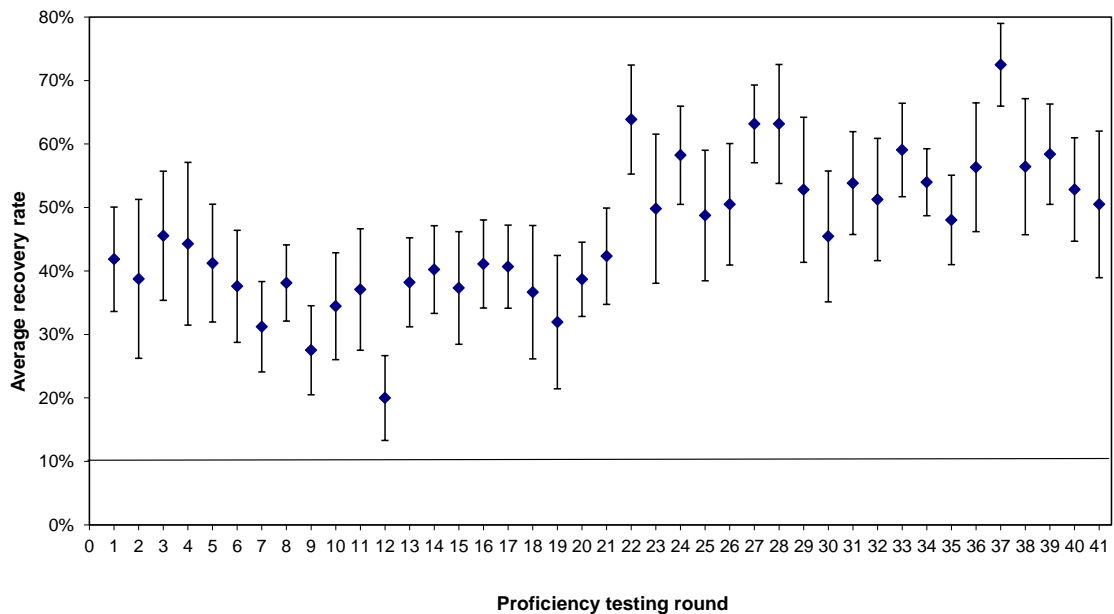
Total average *Cryptosporidium* recovery rate (50.8%) has increased compared to the previous round. Figure 1A shows the average percent recovery rate for *Cryptosporidium* for each round (refer to notes below).

Figure 1A: Comparison of total average recovery rates for *Cryptosporidium*



Total average *Giardia* recovery rate (50.9%) has decreased compared to the previous round. The graph below displays this (refer to notes below figure).

Figure 1B: Comparison of total average recovery rates for *Giardia*



Notes to Average Recovery Rates Graphs:

1. The vertical bars in the graphs represent 95% confidence intervals.
2. All rounds up to Round 37, except rounds 1, 2, 3 and 8, contain QC mud (see table on pages 11 through to 14). For Round 5, one sample (Sample type 4); for Round 14, one sample (Sample C); for Round 15, one sample (Sample D); and for Round 34, one sample (Sample C) out of the five samples analysed by each laboratory did not contain QC mud.
3. From Rounds 14-21, average recovery rates are calculated on confirmed counts only. For rounds excluding Rounds 14-21, participants reported either total or confirmed counts, and therefore the average recovery rates presented in this table prior to Round 14 may include both total and confirmed counts. From Round 22 onwards, only total counts are presented.
4. Regarding Round 37, selected samples contained QC mud or Drinking Water Plant Filter Backwash (DWPFBW).
5. Rounds 38 - 41 samples contained DWPFBW only.

Figure 2A: Reference Count vs % Recovery for *Cryptosporidium*

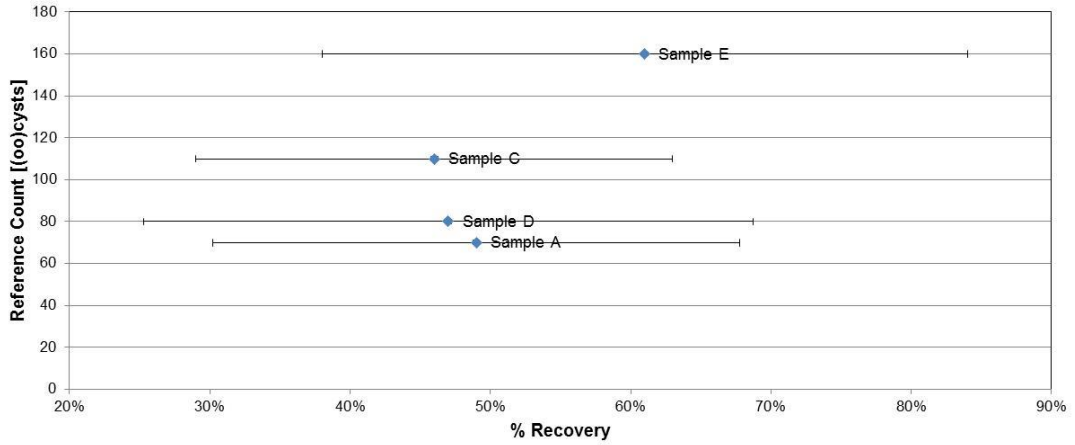


Figure 2B: Added Matrix vs % Recovery for *Cryptosporidium*

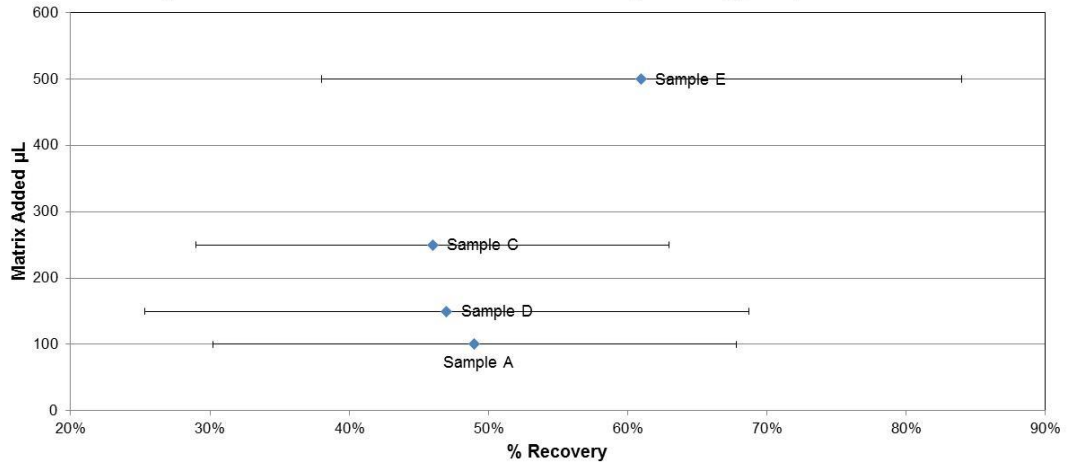
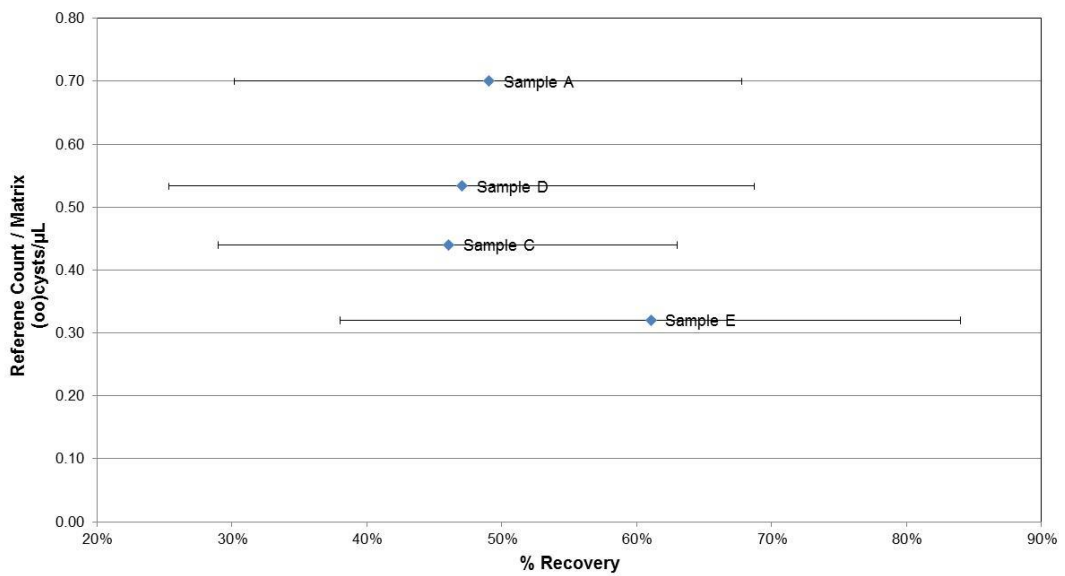


Figure 2C: Reference Count/Matrix vs % Recovery for *Cryptosporidium*



1. The blue diamonds represent the mean recoveries for each sample.
2. The horizontal bars (error bars) represent measurement uncertainties.

Figure 3A: Reference Count vs % Recovery for *Giardia*

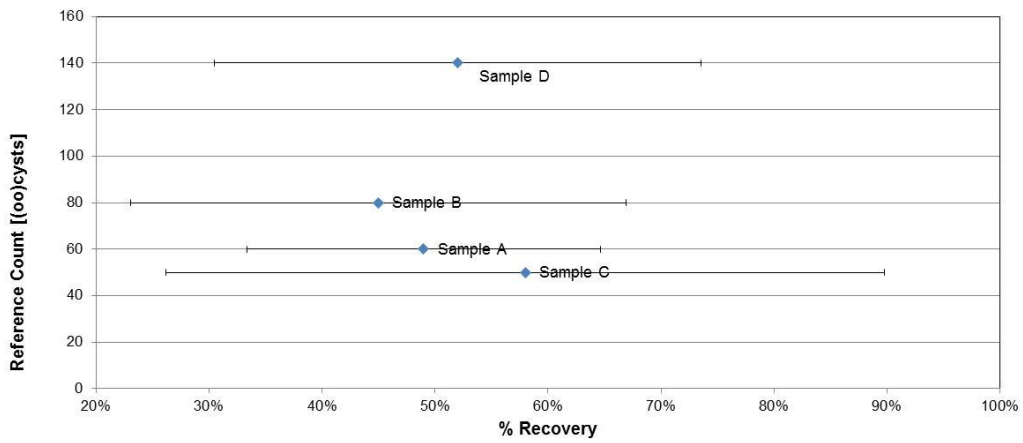


Figure 3B: Added Matrix vs % Recovery for *Giardia*

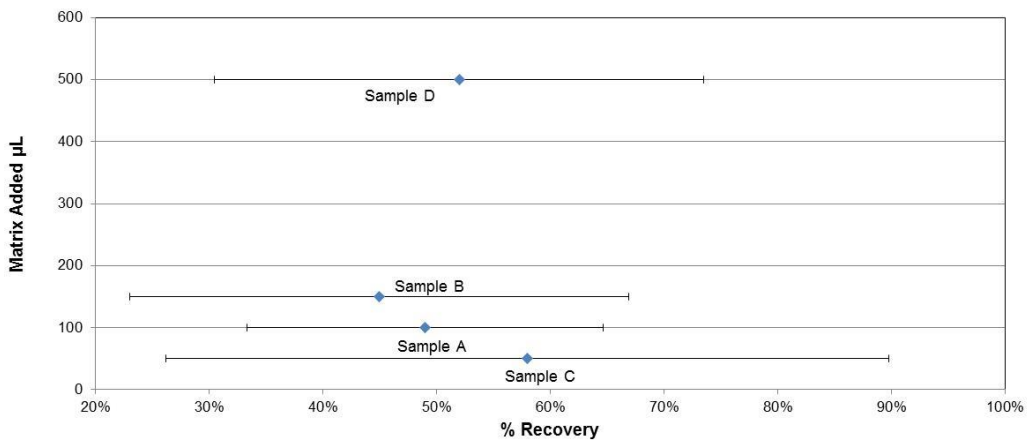
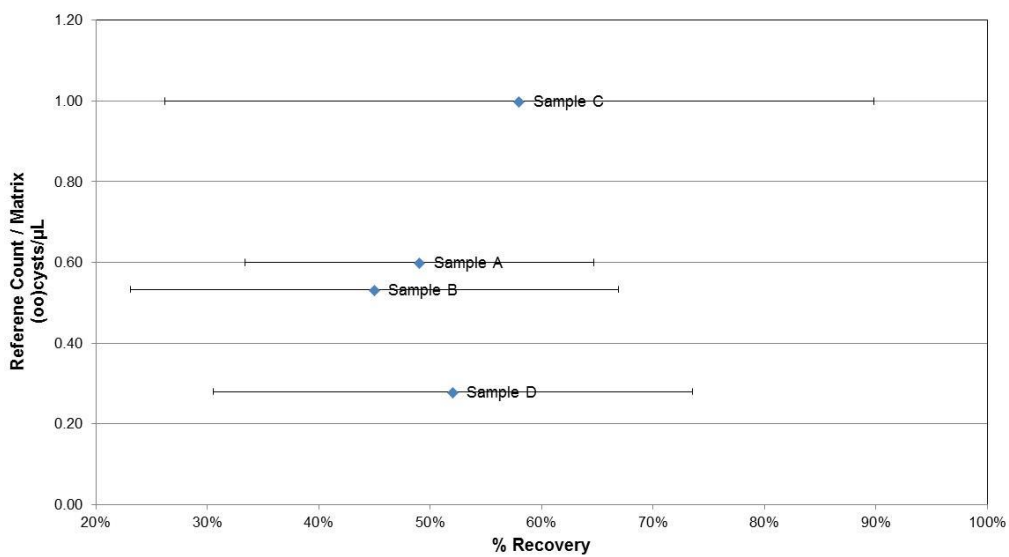


Figure 3C: Reference Count/Matrix vs % Recovery for *Giardia*



1. The blue diamonds represent the mean recoveries for each sample.
2. The horizontal bars (error bars) represent measurement uncertainties.

Measurement Uncertainty (MU) Estimation

Results including MU calculations are presented as relative % recoveries, as seen in Table B below. This table and comments are provided for information purposes only, and do not affect the evaluation of participants' results.

TABLE B: *Cryptosporidium* and *Giardia* Round 41 Recovery - Measurement Uncertainty

SAMPLE	ORGANISM	MEDIAN RECOVERY (%)	STANDARD DEVIATION	RELATIVE STANDARD DEVIATION (RSD - %)	✦ MEASUREMENT UNCERTAINTY (RSD - %)	REFERENCE COUNT
A	<i>Giardia</i> <i>Cryptosporidium</i>	42	17	41	34	60
		50	20	40	40	70
B	<i>Giardia</i> <i>Cryptosporidium</i>					
		47	18	38	36	110
C	<i>Giardia</i> <i>Cryptosporidium</i>	43	24	56	48	80
		50	24	47	47	80
D	<i>Giardia</i> <i>Cryptosporidium</i>	54	34	63	68	50
E	<i>Giardia</i> <i>Cryptosporidium</i>	52	21	39	41	140
		63	22	35	44	160

Notes for Table B:

- ✦ = All measurement uncertainty values are at the 95% level of confidence.
- Sample D did not include *Cryptosporidium*.
- Sample B did not contain *Giardia*.

The table below shows *Cryptosporidium* oocyst levels for each round.

TABLE C: Comparison of *Cryptosporidium* Oocyst Levels for Each Round

Round	<i>Cryptosporidium</i> levels (Counts)	Round	<i>Cryptosporidium</i> levels (Counts)
1	50-200	21	100-200
2	50-200	22	50-300
3	50-300	23	50-250
4	110	24	50-200
5	50-200	25	50-250
6	25-75	26	50-200
7	50-100	27	50-200
8	65-140	28	50-250
9	125	29	50-140
10	110-235	30	80-135
11	50-200	31	70-140
12	110-235	32	50-130
13	90-205	33	50-170
14	55-135	34	50-130
15	55-135	35	50-120
16	55-120	36	50-130
17	90-310	37	50-120
18	50-300	38	50-110
19	50-300	39	50-110
20	50-200	40	90-180
		41	70-160

The table below shows *Giardia* cyst levels for each round.

TABLE D: Comparison of *Giardia* Cyst Levels for Each Round

Round	<i>Giardia</i> levels (Counts)	Round	<i>Giardia</i> levels (Counts)
1	50-200	21	90-200
2	50-200	22	50-250
3	50	23	50-300
4	40	24	50-200
5	50-200	25	50-250
6	75-120	26	50-250
7	50	27	50-200
8	65-140	28	50-200
9	55	29	50-150
10	70-85	30	85-150
11	50-200	31	50-140
12	110-125	32	50-170
13	90-145	33	50-130
14	55-200	34	50-170
15	55-200	35	50-120
16	120-255	36	50-170
17	135-310	37	60-120
18	150-300	38	60-170
19	150-300	39	60-170
20	50-120	40	60-160
		41	50-140

Method Commentary

Analysis of Results by Method Groups

In order for methods to be grouped for analysis, PTA requires at least 11 sets of results from the same method group. As there were less than 11 results submitted for each method, reliable conclusions cannot be drawn from analysing grouped methods on this occasion. Therefore, results from all method groups have been pooled for analysis.

Of the twelve participating laboratories, four indicated the use of cartridge filtration for their bulk water concentration method, three used sponge filtration, while two used flat-bed filtration. All laboratories used IMS as their purification method and immunofluorescence microscopy as their presumptive ID and total count enumeration method. All twelve laboratories reported the use of DAPI staining for confirmation, of which nine also indicated the additional use of DIC microscopy.

Laboratory code 2 had the lowest mean *Cryptosporidium* recovery, while laboratory code 3 had the lowest mean *Giardia* recovery. Laboratory code 1 had the highest variability for the analysis of *Cryptosporidium* of all participating laboratories (Table A1.6), while laboratory code 4 had the highest

variability for the analysis of *Giardia* (Table A1.9). These laboratories used cartridge filtration for bulk water concentration, IMS for purification, microscopy for enumeration and both DAPI and DIC for confirmation.

TABLE E: Recovery and recovery variability by bulk water concentration method

Bulk Water Concentration Method	Mean <i>Cryptosporidium</i> Recovery (%) and Variability (RSD)	Mean <i>Giardia</i> Recovery and Variability (RSD)	Number of laboratories using method
Cartridge Filtration	19-56 (16-33%)	23-53 (20-35%)	4
Flat Bed Filtration	70-71% (10-11%)	56-81% (6-10%)	2
*Sponge	56 (23%)-lab 7 only	48 (33%)-lab 7 only	1

*Note four labs (7-9, 12) used sponge filtration, however only laboratory 7 reported results for all samples

Laboratory codes 5 and 7 obtained lower confirmation of *Cryptosporidium* oocysts and *Giardia* cysts than other laboratories (A1.8, A1.11). These laboratories both used DAPI + DIC for confirmation. Laboratory code 5 used flat bed filtration, whilst laboratory code 7 used sponge filtration for bulk water concentration.

Laboratory codes 10 and 11 did not report their bulk water concentration method(s).

Overall Laboratory Performance

Overall, the recovery of *Cryptosporidium* slightly increased, whilst the recovery of *Giardia* oocysts slightly decreased when compared to the previous round (40).

With regards to the analysis of *Cryptosporidium*, performance was satisfactory for all sample doses and matrix amounts with results for all samples inside the acceptable recovery rate limit (10% - 110%). The analysis of *Giardia* resulted with one laboratory (laboratory code 12) reporting a result (Sample D 118%) outside the acceptable maximum recovery rate limit. Three participating laboratories (laboratory codes 4, 5 and 12) received false positive results for the analysis of *Cryptosporidium* in PTA Sample D. Two participating laboratories (laboratory codes 2 and 5) received false positive results for the analysis of *Giardia* in PTA Sample B.

The background matrix material contains potentially confounding particulates, including *Giardia*-, and *Cryptosporidium*-like objects. Laboratory code 12 did not report a confirmed *Giardia* count for sample D in which they obtained an above-maximum recovery (118%), although use of DAPI and DIC was indicated. All laboratories obtaining false-positive results should review their confirmation procedures. Review of typical/atypical *Giardia* cyst and *Cryptosporidium* oocyst morphological features – including size and DAPI stained aspects, as well as use of reference IFA, DAPI and/or DIC photomicrographs may assist.

Laboratory code 2 obtained the lowest recovery and second highest variable recovery of *Cryptosporidium* oocysts than other laboratories (A1.6). Laboratory code 3 obtained the lowest recovery and second highest variable recovery of *Giardia* cysts (A1.9). Both laboratories used cartridge filtration for bulk water concentration. These laboratories should investigate potential causal factors, including failure to concentrate from bulk water and/or disperse (oo)cysts from matrix materials prior to IMS; and/or failure to add, capture or dissociate *Cryptosporidium* IMS beads; and/or status of associated reagents.

Laboratory codes 7 and 5 obtained the lowest confirmation of all laboratories for the analysis of *Cryptosporidium* and *Giardia* respectively. These laboratories used sponge and flat bed filtration or bulk water concentration, respectively. Both used DAPI, with one (laboratory code 7) also using DIC for confirmation.

Laboratory codes 7 and 5 should review confirmation procedures including DAPI staining and/or DIC procedures (setup, use of prism, etc.) in light of relative performance and take corrective action(s) to investigate sources of failure to confirm during sample analysis. Some laboratories experience issues with low percentages of DAPI stained cysts and oocysts. Several methods suggest use of heat and/or acid for dissociation of oocysts from IMS beads, as well as permeabilisation for subsequent DAPI staining. Laboratory codes 5 and 7 may find the following publication of interest if such techniques to optimise DAPI staining are not already employed: Ware, MW, Wymer, L, Lindquist, and Schaefer, FW. (2003).

Measurement Uncertainty (MU)

Estimated uncertainties of measurement between laboratories were not atypical for these measurands. Note that not all laboratories provided sufficient information for relative MU assessment (i.e. laboratory codes 2, 4, 5, 8, 10, 11 and 12).

The highest reported MU (68% RSD) was associated with generally low-level dose and matrix combination (50 *Giardia* cysts, 50 µL matrix, sample D).

Laboratory code 9 neglected to report MU-associated *n*'s for *Cryptosporidium* and *Giardia*. This facility is advised to clarify and/or report associated *n*'s in future.

Laboratory code 7 should note that the minimum *n* generally considered acceptable for MU estimation is ≥ 10 .

TABLE F: Overall Laboratory Performance

Round	Sample Type	Percentage false positive and false negative results reported	Number of laboratories reporting false results	Percentage low/high recovery results reported	Number of laboratories reporting low/high percentage recovery rates
1	10 Litres - tap water	11.0%	6	11.0%	7
2	10 Litres - tap water	6.7%	1	7.8%	3
3	10 Litres -Milli-Q water	3.8%	3	4.7%	3
4	10 Litres - RO water + QC mud + confounding organisms	10.3%	3	11.8%	4
5	10 Litres - RO water + QC mud*	7.0%	4	11.0%	5
6	10 Litres - RO water + QC mud	8.3%	4	8.3%	5
7	Concentrate samples - QC mud - Labs. add to 10 Litres distilled water	8.2%	4	6.4%	5
8	10 Litres - RO water	1.2%	1	1.2%	1
9	10 Litres - RO water + QC mud	2.7%	1	7.3%	4
10	Concentrate samples - QC mud - Labs. add to 10 Litres distilled water & 10 Litres - RO water + QC mud	2.3%	1	3.5%	2

Round	Sample Type	Percentage false positive and false negative results reported	Number of laboratories reporting false results	Percentage low/high recovery results reported	Number of laboratories reporting low/high percentage recovery rates
11	10 Litres - RO water + QC mud	0.0%	0	6.8%	4
12	10 Litres - RO water + QC mud	5.5%	2	17.5%	6
13	10 Litres - RO water + QC mud	0.0%	0	10.0%	4
14	10 Litres - RO water + QC mud*	2.6%	1	2.6%	1
15	Concentrate samples - QC mud* - Labs. add to 10 Litres distilled water	1.3%	1	5.0%	2
16	Concentrate samples - QC mud - Labs. add to 10 Litres distilled water	0.0%	0	3.3%	2
17	Concentrate samples - QC mud - Labs. add to 10 Litres distilled water	1.5%	1	2.9%	1
18	Concentrate samples - QC mud - Labs. add to 10 Litres water	0.0%	0	0.0%	0
19	Concentrate samples - QC mud - Labs. add to 10 Litres water	6.0%	1	11.4%	1
20	Concentrate samples - QC mud - Labs. add to 10 Litres water	10.0%	4	7.1%	3

Round	Sample Type	Percentage false positive and false negative results reported	Number of laboratories reporting false results	Percentage low/high recovery results reported	Number of laboratories reporting low/high percentage recovery rates
21	Concentrate samples - QC mud - Labs. add to 10 Litres water	5.4%	1	10.7%	2
22	Concentrate samples - QC mud - Labs. add to 10 Litres water	1.4%	1	1.4%	1
23	Concentrate samples - QC mud - Labs. add to 10 Litres water	0.0%	0	1.7%	1
24	Concentrate samples - QC mud - Labs. add to 10 Litres water	1.4%	1	0.0%	0
25	Concentrate samples - QC mud - Labs. add to 10 Litres water	0.0%	0	0.0%	0
26	Concentrate samples - QC mud - Labs. add to 10 Litres water	1.4%	1	4.3%	2
27	Concentrate samples - QC mud - Labs. add to 10 Litres water	0.0%	0	0.0%	0
28	Concentrate samples - QC mud - Labs. add to 10 Litres water	0.0%	0	3.3%	1

Round	Sample Type	Percentage false positive and false negative results reported	Number of laboratories reporting false results	Percentage low/high recovery results reported	Number of laboratories reporting low/high percentage recovery rates
29	Concentrate samples - QC mud - Labs. add to 10 Litres water	10.0%	2	18.8%	3
30	Concentrate samples - QC mud - Labs. add to 10 Litres water	2.5%	1	3.75%	3
31	Concentrate samples - QC mud - Labs. add to 10 Litres water	0.0%	0	1.4%	1
32	Concentrate samples - QC mud - Labs. add to 10 Litres water	0.0%	0	3.5%	1
33	Concentrate samples - QC mud - Labs. add to 10 Litres water	0.0%	0	0.0%	0
34	Concentrate samples - QC mud - Labs. add to 10 Litres water	0.0%	0	0.0%	0
35	Concentrate samples - QC mud - Labs. add to 10 Litres water	3.3%	1	0.0%	0
36	Concentrate samples - QC mud - Labs. add to 10 Litres water	0.0%	0	0.0%	0
37	Concentrate samples - QC mud - Labs. add to 10 Litres water	10%	2	9.38%	3

Round	Sample Type	Percentage false positive and false negative results reported	Number of laboratories reporting false results	Percentage low/high recovery results reported	Number of laboratories reporting low/high percentage recovery rates
38	Concentrate samples - QC mud - Labs. add to 10 Litres water	1.25%	1	7.81%	5
39	Concentrate samples - DWPFBW - Labs. add to 10 Litres water	1.11%	1	0.0%	0
40	Concentrate samples - DWPFBW - Labs. add to 10 Litres water	0.0%	0	0.0%	0
41	Concentrate samples - DWPFBW - Labs. add to 10 Litres water	6.06%	4	1.51%	1

Notes for Table F:

1. RO = reverse osmosis.
2. * = For Round 5, QC mud was only added to Sample types 1, 2, 3 and 5. For Round 14, QC mud was only added to Samples A, B, D and E. For Round 15, QC mud was only added to Samples A, B, C and E. For Round 34, QC mud was only added to Samples A, B, D and E.
3. For Round 35, a combination of QC mud or Drinking Water Plant Filter Backwash (DWPFBW) was added to samples.
4. Rounds 38 - 41 samples contained DWPFBW only.

Conclusions

This round saw the *Cryptosporidium* recovery rates increase, whilst the *Giardia* recovery rates decreased in comparison to the previous round.

All laboratories (with the exception of laboratory code 12 Sample D in the analysis of *Giardia*) reported recoveries in the acceptable range for each of the two respective measurands (*Cryptosporidium* and *Giardia*). Four laboratories (laboratory codes 2, 4, 5 and 12) reported false positive results.

8. REFERENCES

- [1] *Guide to Proficiency Testing Australia*, 2016 (this document can be found on the PTA website, www.pta.asn.au).
- [2] *Evaluation of an alternative IMS dissociation procedure for use with Method 1622: detection of Cryptosporidium in water*. Ware, MW, Wymer, L, Lindquist, and Schaefer, FW (2003).
- [3] USEPA (1996) *Microscopic particulate analysis (MPA) for filtration plant optimization*. EPA 910-R-96-001.

APPENDIX A

Summary of Results

Results *Cryptosporidium* (total counts)

REFERENCE COUNTS	70	110	80	0	160	
DWPFBW per vial	100µL	250µL	150 µL	50µL	500µL	
Lab Code No.	Sample A	Sample B	Sample C	Sample D	Sample E	Method Codes
Code 1 - Total Count	31	52	40	0	134	
Confirmed Count	31	52	40	0	134	3, 7, 8, 9
MU	19 - 50 n = 19	32 - 83 n = 19	25 - 64 n = 19	-	84 - 215 n = 19	
Code 2 - Total Count	-	17	18	-	-	
Confirmed Count	-	17	18	-	-	3, 7, 9, 10
MU	-	-	-	-	-	
Code 3 - Total Count	17	39	26	0	48	
Confirmed Count	17	39	26	0	48	3, 7, 8, 9, 10
MU	26.05 n = >500	26.05 n = >500	26.05 n = >500	26.05 n = >500	26.05 n = >500	
Code 4 - Total Count	-	-	-	11	75	
Confirmed Count	-	-	-	11	75	3, 6, 7, 8, 9, 10
MU	-	-	-	-	-	
Code 5 - Total Count	47	64	61	3	131	
Confirmed Count	44	63	60	3	38	2, 6, 7, 8, 9
MU	-	-	-	-	-	
Code 6 - Total Count	55	82	43	0	119	
Confirmed Count	55	70	43	0	119	2, 7, 8, 9
MU	55 ± 36 (at 95% CI, n=800)	82 ± 53 (at 95% CI, n=800)	43 ± 28 (at 95% CI, n=800)	-	119 ± 76 (at 95% CI, n=800)	
Code 7 - Total Count	35	53	60	-	81	
Confirmed Count	21	37	44	-	61	1, 6, 7, 8, 9, 10,
MU	±11 n=6	±20 n=7	±26 n=8	-	±38 n=9	
Code 8 - Total Count	38	-	-	-	-	
Confirmed Count	38	-	-	-	-	1, 7, 8, 9, 10
MU	-	-	-	-	-	

A1.2

Code 9 - Total Count	17	-	-	-	-	
Confirmed Count	17	-	-	-	-	7, 8, 9, 10
MU	14 11,6 - 34,4	-	-	-	-	
Code 10 - Total Count	-	47	-	-	-	
Confirmed Count	-	47	-	-	-	7, 8, 9, 10
MU	-	-	-	-	-	
Code 11 - Total Count	-	-	15	-	-	
Confirmed Count	-	-	15	-	-	7, 8, 9, 10
MU	-	-	-	-	-	
Code 12 - Total Count	-	-	-	35	-	
Confirmed Count	-	-	-	-	-	1, 7, 8, 9, 10
MU	-	-	-	-	-	

Note:1. A "-" indicates that no result was returned for this sample/test.

Summary Statistics for *Cryptosporidium* (total counts)

	Sample A	Sample B	Sample C	Sample D	Sample E
No. of Results	7	7	7	6	6
Minimum	17	17	15	0	48
Maximum	55	82	61	35	134
Average	34	51	38	NA	98
Median	35.0	52.0	40.0	NA	100.0
SD	14.2	20.2	18.8	NA	35.1
Median Absolute Deviation (%)	41	39	47	NA	35.1

A1.3

Method Codes

<u>Analysis</u>	<u>Method used to obtain results</u>	<u>Code</u>
Concentration	Filtration (Sponge)	1
	Filtration (Flat Bed)	2
	Filtration (Cartridge)	3
	Filtration (Tangential Flow)	4
	Flocculation	5
	Centrifugation	6
Purification	IMS	7
Enumeration	Immunofluorescence Microscopy	8
Confirmation	DAPI Staining	9
	DIC Microscopy	10
Methods not defined	-	11

A1.4

Results *Giardia* (total counts)

REFERENCE COUNTS	60	0	80	50	140	
DWPFBW	100µL	250µL	150 µL	50µL	500µL	
Lab Code No.	Sample A	Sample B	Sample C	Sample D	Sample E	Method Codes
Code 1 - Total Count	34	0	50	16	84	
Confirmed Count	34	0	50	16	84	3, 7, 8, 9
MU	18 - 65 n = 19	-	26 - 95 n = 19	8 - 30 n = 19	44 - 59 n = 19	
Code 2 - Total Count	-	13	18	-	-	
Confirmed Count	-	13	18	-	-	3, 7, 9, 10
MU	-	-	-	-	-	
Code 3 - Total Count	16	0	14	10	37	
Confirmed Count	15	0	14	10	35	3, 7, 8, 9, 10
MU	25.88 n = >500	25.88 n = >500	25.88 n = >500	25.88 n = >500	25.88 n = >500	
Code 4 - Total Count	-	-	-	16	74	
Confirmed Count	-	-	-	16	74	3, 6, 7, 8, 9, 10
MU	-	-	-	-	-	
Code 5 - Total Count	38	1	45	27	71	
Confirmed Count	21	1	15	3	4	2, 6, 7, 8, 9
MU	-	-	-	-	-	
Code 6 - Total Count	45	0	66	40	120	
Confirmed Count	42	0	56	37	111	2, 7, 8, 9
MU	45 ± 25 (at 95% CI, n=800)	-	66 ± 36 (at 95% CI, n=800)	40 ± 22 (at 95% CI, n=800)	120 ± 65 (at 95% CI, n=800)	
Code 7 - Total Count	25	-	34	36	51	
Confirmed Count	20	-	29	28	44	1, 6, 7, 8, 9, 10,
MU	±9 n=6	-	±8 n=7	±9 n=8	±16 n=9	
Code 8 - Total Count	23	-	-	-	-	
Confirmed Count	23	-	-	-	-	1, 7, 8, 9, 10
MU	-	-	-	-	-	

A1.5

Code 9 - Total Count	23	-	-	-	-	
Confirmed Count	20	-	-	-	-	1, 7, 8, 9, 10
MU	14 10,6 - 23,4	-	-	-	-	
Code 10 - Total Count	-	0	-	-	-	
Confirmed Count	-	0	-	-	-	7, 8, 9, 10
MU	-	-	-	-	-	
Code 11 - Total Count	-	-	23	-	-	
Confirmed Count	-	-	23	-	-	7, 8, 9, 10
MU	-	-	-	-	-	
Code 12 - Total Count	-	-	-	-	-	
Confirmed Count	-	-	-	-	-	1, 7, 8, 9, 10
MU	-	-	-	-	-	

Note:

1. A "-" indicates that no result was returned for this sample/test.

Summary Statistics for *Giardia* (total counts)

	Sample A	Sample B	Sample C	Sample D	Sample E
No. of Results	7	6	7	7	6
Minimum	16	0	14	10	37
Maximum	45	13	66	59	120
Average	29	NA	36	29	73
Median	25.0	NA	34.0	27.0	72.5
SD	10.2	NA	19.0	17.2	28.7
Median Absolute Deviation (%)	40.8	NA	56	64	40

Method Codes

Analysis	Method used to obtain results	Code
Concentration	Filtration (Sponge)	1
	Filtration (Flat Bed)	2
	Filtration (Cartridge)	3
	Filtration (Tangential Flow)	4
	Flocculation	5
	Centrifugation	6
Purification	IMS	7
Enumeration	Immunofluorescence Microscopy	8
Confirmation	DAPI Staining	9
	DIC Microscopy	10
Methods not defined	-	11

Summary of Percentage Recovery Rates and Charts

A1.6

Recovery Results for *Cryptosporidium* (%)Calculated as a % of TOTAL Counts / Reference Counts

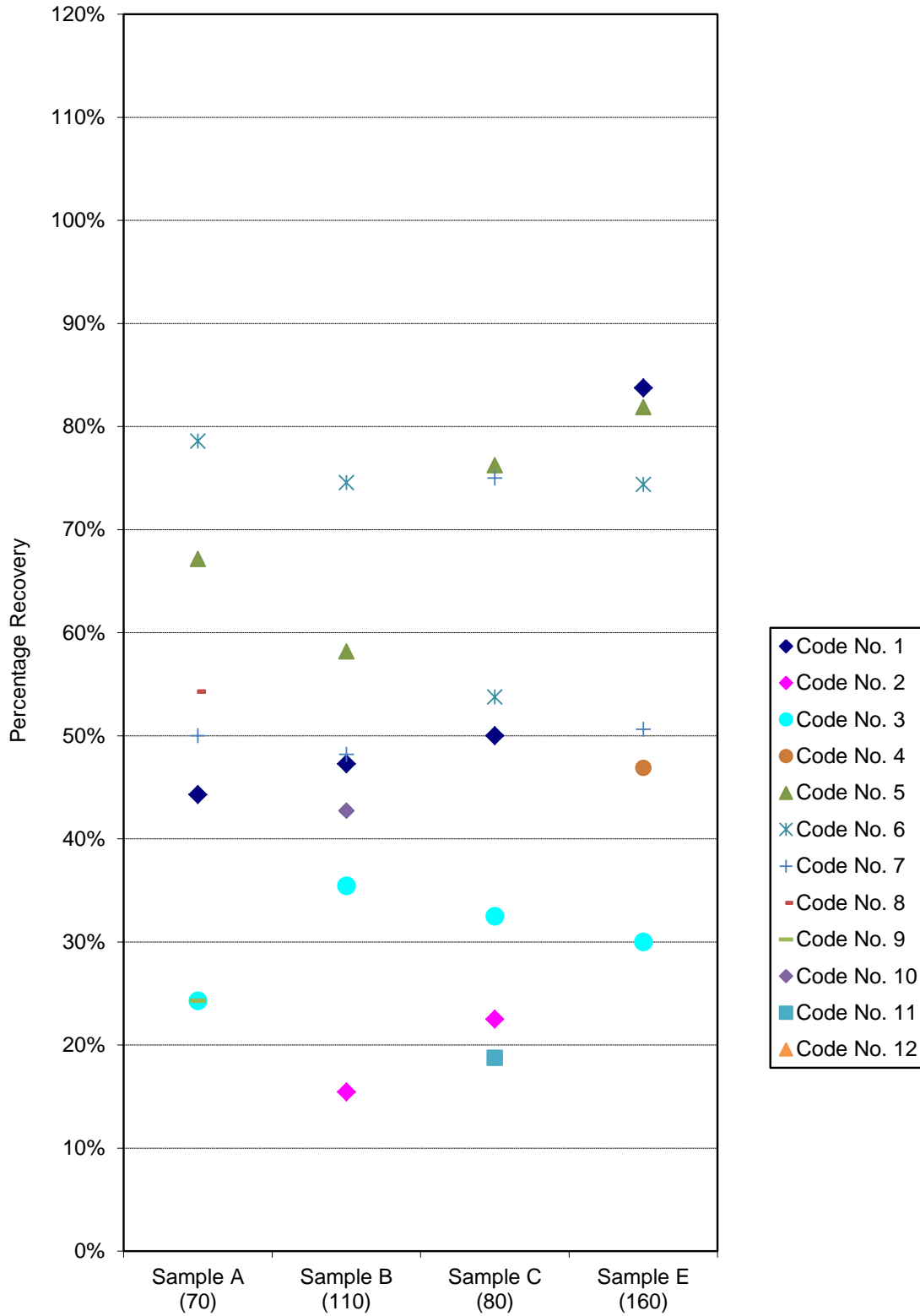
Reference Counts	70	110	80	160			
DWPFBW	100 µL	250 µL	150 µL	500 µL	Lab	Lab	Lab
Code No.	Sample A	Sample B	Sample C	Sample E	Average	SD	%RSD
1	44%	47%	50%	84%	56%	18%	33%
2	-	15%	23%	-	19%	5%	26%
3	24%	35%	33%	30%	31%	5%	16%
4	-	-	-	47%			
5	67%	58%	76%	82%	71%	10%	15%
6	79%	75%	54%	74%	70%	11%	16%
7	50%	48%	75%	51%	56%	13%	23%
8	54%	-	-	-			
9	24%	-	-	-			
10	-	43%	-	-			
11	-	-	19%	-			
12	-	-	-	-			
No. of Results	7	7	7	6			
Minimum	24%	15%	19%	30%			
Maximum	79%	75%	76%	84%			
Average	49%	46%	47%	61%			
Median	50%	47%	50%	63%			

Notes:

1. The acceptable percentage recovery rate range is 10-110%.
2. The median is provided for information only. It is the middle result. It is a measure of the centre of the data and is similar to the mean (or average), however, is less subject to outlier results.
3. "-" refers to no result returned.

A1.7

Results *Cryptosporidium* (% Recovery Rate)



Note:

1. *Cryptosporidium* reference count included in brackets alongside corresponding sample name.

A1.8

Confirmed Results for *Cryptosporidium* (%)

Calculated as a % of Confirmed Counts / Total Counts

Reference Counts	70	110	80	160	Lab Average
DWPFBW	100 µL	250 µL	150 µL	500 µL	
Code No.	Sample A	Sample B	Sample C	Sample E	
1	100%	100%	100%	100%	100%
2	-	100%	100%	-	100%
3	100%	100%	100%	100%	100%
4	-	-	-	100%	
5	94%	98%	98%	29%	80%
6	100%	85%	100%	100%	96%
7	60%	70%	73%	75%	70%
8	100%	-	-	-	
9	100%	-	-	-	
10	-	100%	-	-	
11	-	-	100%	-	
12	-	-	-	-	
No. of Results	7	7	7	6	
Minimum	60%	70%	73%	29%	
Maximum	100%	100%	100%	100%	
Average	93%	93%	96%	84%	
Median	100%	100%	100%	100%	

Note:

1. "-" refers to no result returned.

A1.9

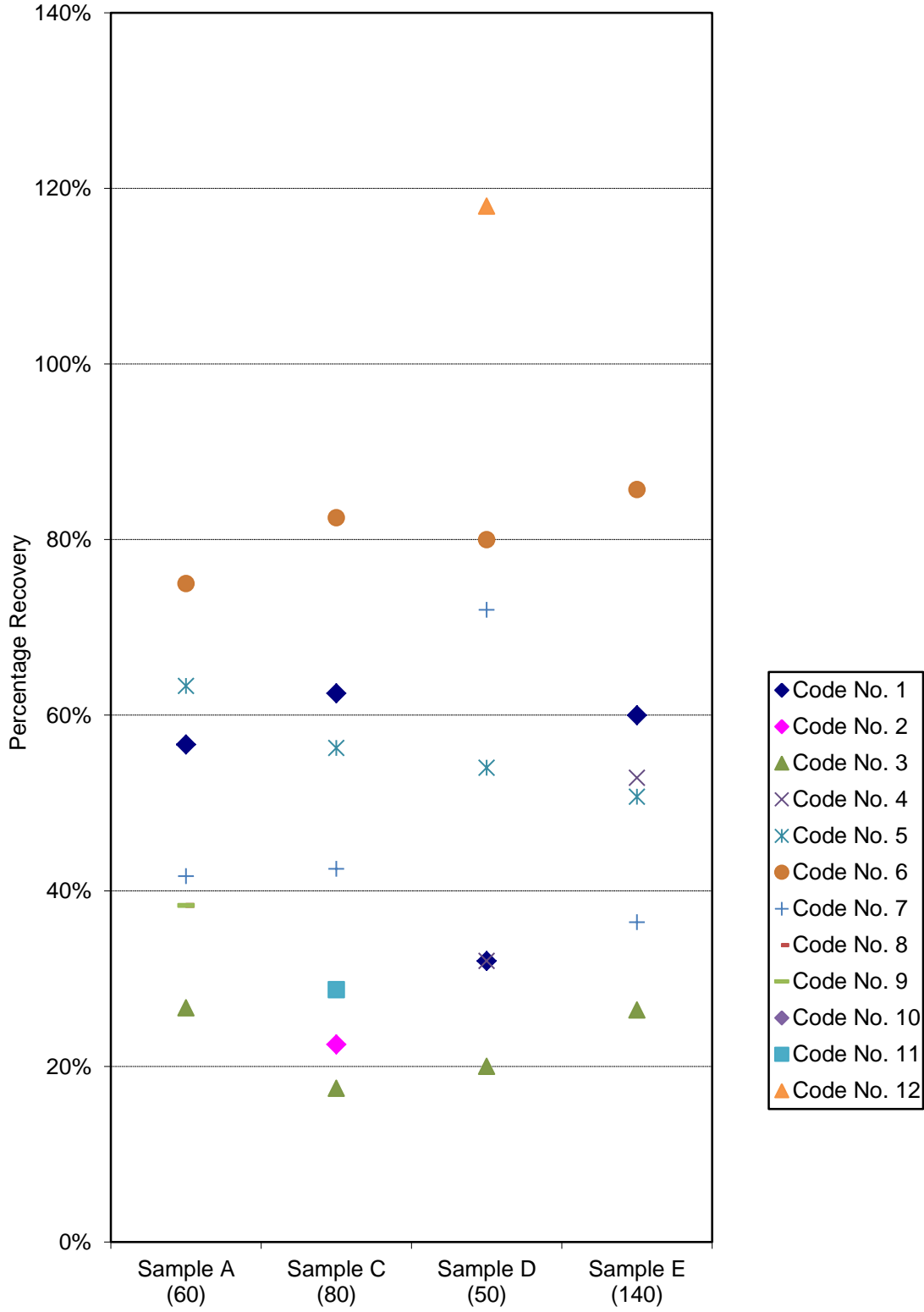
Recovery Results for *Giardia* (%)Calculated as a % of TOTAL Counts / Reference Counts

Reference Counts	60	80	50	140			
DWPFBW	100 µL	150 µL	50 µL	500 µL	Lab Average	Lab SD	Lab %RSD
Code No.	Sample A	Sample C	Sample D	Sample E			
1	57%	63%	32%	60%	53%	14%	27%
2	-	23%	-	-			
3	27%	18%	20%	26%	23%	5%	20%
4	-	-	32%	53%	42%	15%	35%
5	63%	56%	54%	51%	56%	5%	10%
6	75%	83%	80%	86%	81%	5%	6%
7	42%	43%	72%	36%	48%	16%	33%
8	38%	-	-	-			
9	38%	-	-	-			
10	-	-	-	-			
11	-	29%	-	-			
12	-	-	118%	-			
No. of Results	7	7	7	6			
Minimum	27%	18%	20%	26%			
Maximum	75%	83%	118%	86%			
Average	49%	45%	58%	52%			
Median	42%	43%	54%	52%			

Notes:

1. The acceptable percentage recovery rate range is 10-110%.
2. The median is provided for information only. It is the middle result. It is a measure of the centre of the data and is similar to the mean (or average), however, is less subject to outlier results.
3. "-" refers to no result returned.

Results *Giardia* (% Recovery Rate)



Note: 1. *Giardia* reference count included in brackets alongside corresponding sample name.

A1.11

Confirmed Results for *Giardia* (%)

Calculated as a % of Confirmed Counts / Total Counts

Reference Counts	60	80	50	140	Lab Average
DWPFBW	100 µL	150 µL	50 µL	500 µL	
Code No.	Sample A	Sample C	Sample D	Sample E	
1	100%	100%	100%	100%	100%
2	-	100%	-	-	
3	94%	100%	100%	95%	97%
4	-	-	100%	100%	100%
5	55%	33%	11%	6%	26%
6	93%	85%	93%	93%	
7	80%	85%	78%	86%	
8	100%	-	-	-	
9	87%	-	-	-	
10	-	-	-	-	
11	-	100%	-	-	
12	-	-	-	-	
No. of Results	7	7	6	6	
Minimum	55%	33%	11%	6%	
Maximum	100%	100%	100%	100%	
Average	87%	86%	80%	80%	
Median	93%	100%	96%	94%	

Note:

1. "-" refers to no result returned.

APPENDIX B

Homogeneity Testing and Trip Control

Homogeneity Testing and Trip Control

The samples for Round 41 were produced in line with EasySeed batch number 631, which are certified reference samples. The preparation of these certified reference samples is considered to have satisfied the homogeneity testing requirements.

An estimate of uncertainty, expressed as Relative Standard Deviation (RSD), for each organism for the *Cryptosporidium* and *Giardia* proficiency testing program was calculated for each dose within the sample set. These are presented in the table below:

TABLE G: Relative Standard Deviation for Various Sample Doses (Round 41)

ORGANISM	DOSE	RSD (%)	MU as RSD (Absolute)	Resultant dose with absolute uncertainty
<i>Cryptosporidium</i>	70	3	4	70 ± 4
<i>Cryptosporidium</i>	80	3	5	80 ± 5
<i>Cryptosporidium</i>	110	2	4	110 ± 4
<i>Cryptosporidium</i>	160	2	7	160 ± 7
<i>Giardia</i>	50	1	3	50 ± 3
<i>Giardia</i>	60	1	3	60 ± 3
<i>Giardia</i>	80	2	3	80 ± 3
<i>Giardia</i>	140	2	7	140 ± 7

Notes for Table G:

1. Historical QC data and homogeneity testing data have been used to calculate the information in the above table.
2. All measurement uncertainty estimates are at the 95% level of confidence.
3. All numbers have been rounded to whole numbers. Although it may appear that the "MU as RSD is always 2 x RSD%" rule has been ignored, the rule itself ignores the impact of the continuous data used to calculate each value (the impact of rounding up/down).

Trip Control

Water concentrate sample F, spiked with 80 *Cryptosporidium* oocysts and 60 *Giardia* cysts was used as the trip control.

BTF Pty Ltd retained a 3.5 mL water concentrate samples F (F_{NoT}), on their premises after preparation. Sample F (F_{NoT}) was added to 10 L of distilled water, concentrated and analysed on 15 June 2018.

One nominated laboratory (Code 3) was provided with a 3.5 mL water concentrate samples F (F_T) and was requested to return the sample immediately upon receipt. Sample F (F_T) was subsequently added to 10 L of distilled water and analysed by BTF Pty Ltd on 15 June 2018. Trip control samples were concentrated using membrane filtration, and then analysed using the Dynal IMS system and epifluorescence microscopy.

Results for Control Samples F_{NoT} , F_T

Date Analysed	<i>Crypto.</i> Counts	No. DAPI positive	<i>Giardia</i> Counts	No. DAPI positive
15 June 2018 (Sample kept on premises)	41	93%	30	80%
15 June 2018 (Sample sent to laboratory and returned)	41	98%	34	97%

Actual counts	80	60
F_{NoT} % Recovery Rate	51%	50%
F_T % Recovery Rate	51%	57%

The trip controls sent to the laboratory indicated sample stability during transport. Percentage recovery rates for trip control samples lie within the acceptable range of 10% - 110%.

APPENDIX C

Instructions to Participants

and

Results Sheet

Proficiency Testing Program
Cryptosporidium and Giardia Round 41

INSTRUCTIONS TO PARTICIPANTS

To ensure results from this program can be properly analysed, participants are asked to carefully adhere to the following instructions.

1. For this round each participant will be supplied with a sample set consisting of five, 3.5 mL bulk-water-concentrate samples. Each sample contains reverse osmosis water that may contain matrix material(s) sourced from surface water (added to simulate an environmental water sample). Samples *may* have been spiked with *Cryptosporidium* oocysts and/or *Giardia* cysts at various concentrations.
Your laboratory may receive an additional 3.5 mL bulk-water-concentrate sample that will be utilised as the proficiency-testing program *Trip Control*. If you receive this sample (labelled "PTA Sample F"), please refer to the included associated covering letter for further instructions.
2. On receipt at your facility, samples must be stored at 1-8°C. The date and time of sample receipt must be recorded on the *Results Sheet*.
3. Mix the 3.5 mL tube containing the bulk-water-concentrate sample by inversion, then immediately place the bottom of the tube on a vortex mixer and mix such that the vortex extends to the bottom of the tube. Add each of the 3.5 mL bulk-water-concentrates to individual, respective 10 L bulk water samples of your choice, taking care not to mix-up the order of the sample vials in relation to their respective 10 L water samples. Ensure the bulk water used for dilution does not contain any *Giardia* cysts or *Cryptosporidium* oocysts. For example, use reverse osmosis or membrane-filtered (suggested pore size ≤ 45 µm) water. Ensure the bulk-water-concentrate sample vial is effectively rinsed and the concentrate thoroughly dispersed throughout the 10 L bulk water. The following rinse procedure is recommended to ensure optimal sample transfer:
 - i) Carefully add the contents of the proficiency testing sample (bulk-water-concentrate) tube to respective 10 L water samples.
 - ii) Add 3 mL 0.05% (v/v) Tween® 20* to the empty sample tube, recap and vortex for 20 sec. Empty contents into the 10 L water sample.
 - iii) Add 3 mL reagent grade water to the empty sample vial, recap and vortex for 20 sec. Empty contents into 10 L water sample.
 - iv) Repeat steps ii-iii.*Laureth-12 Envirocheck® elution buffer or other Tween®-containing solutions for rinsing filters may alternatively be used to rinse bulk-water-concentrate sample tubes.
4. A Senior QA/QC Officer (or similar) must sign the *Results Sheet* declaration to confirm your facility has diluted the bulk-water-concentrate samples to 10 L.
5. Laboratories must then proceed to analyse the 10 L samples using their routine test method (that most frequently employed). Samples are to be tested in the respective order on the *Results Sheet*. One hundred percent (100%) of each sample supplied must be analysed. Participants are advised that analytical methods used will be noted in the Final Report. To allow for confidential treatment of results in the *Final Report*, your facility

C1.2

6. has been allocated a laboratory code number, which appears on your *Results Sheet*.
7. PTA is aware of the internal positive control reference material ColorSeed™. Although PTA understands the advantage of this material as an internal positive control, laboratories should note that it is not acceptable for laboratories to adjust results obtained with the PTA proficiency testing samples on the basis of recoveries obtained using ColorSeed™ unless the respective laboratory routine practice/standard operating procedure uses ColorSeed™ as a true internal standard, i.e. addition to every sample, and correction of observed count using internal standard recovery during routine sample reporting.
8. Record the results for each sample on the *Results Sheet* provided. Participants must report both *Total* and *Confirmed Counts* on the *PTA Results Sheet* and specify the method(s) used for confirmation. **Please be advised** that PTA uses *Total Counts* (rather than *Confirmed Counts*) in data analysis. Participants must not report non-numerical values (i.e. less than/greater than values, presence/absence, detected/not detected, etc.) on the *PTA Results Sheet*. Actual counts observed under the microscope must be reported. Participants must not use conversion (recovery) factors derived from quality control to adjust raw data unless a true internal standard is employed for every routine sample as described in (6) above. If such internal standard correction is used, this must be indicated.
9. Participants are requested to calculate and report an estimate of measurement uncertainty (MU) for each reported *Total Count* result. All MU estimates must be reported in discreet units as a 95% confidence interval (coverage factor $k \approx 2$). Estimates must be reported as either relative (% RSD – e.g. 100 +/- 10% [oo/cysts] at 95% CI) or absolute (e.g. 100 +/- 10 [oo/cysts] at 95% CI) and include the number (n) of determinations used to generate the respective MU estimate.
10. Commence testing as soon as possible after samples are received. IMPORTANT: All participants must return completed *Results Sheets* no later than **Friday 1 June 2018** to:

Yvette Christie
Proficiency Testing Australia
PO Box 7507
SILVERWATER NSW 2128

phone: +61 2 9736 8397
fax: +61 2 9743 6664
email: yvette.christie@pta.asn.au

PTA would like to thank you for participating in this *Cryptosporidium* and *Giardia* proficiency-testing program.



Cryptosporidium and *Giardia* Round 41 - Proficiency Testing Program

Results Sheet

Laboratory Code:

Date / Time of Sample Receipt: _____

Condition of Samples Upon Receipt: _____

Sample	<i>Cryptosporidium</i> Counts			<i>Giardia</i> Counts			Date & time of testing
	Total Count	MU and *n	Confirmed Count	Total Count	MU and *n	Confirmed Count	
A							
B							
C							
D							
E							

*n – number of determinations used to generate MU estimate.

Methods used:

Concentration (e.g. Flocculation) _____

Filtration Type (please tick): Sponge Flat Bed Cartridge Sponge *Other

*Describe _____

Purification (e.g. IMS) _____

Enumeration (e.g. Microscopy) _____

Confirmation method(s) (e.g. DAPI, DIC) _____

Please be advised that methods used to obtain results will be noted in the final report.

Print Name: _____ Date: _____

Signed: _____ (Analyst/s)

I confirm that the concentrate was added to 10 L of water prior to analysis.

Print Name: _____ Date: _____

Signed: _____ (Senior QA/QC Officer or similar)

Return no later than **Friday 1 June 2018** to:

Yvette Christie
 Proficiency Testing Australia, PO Box 7507, Silverwater NSW 2128
 Email: yvette.christie@pta.asn.au Phone: +61 2 9736 8397 Fax: +61 2 9743 6664

GLOSSARY

Trip Control	A sample used to monitor the effect(s) of sample set transport. Sent to a nominated laboratory and returned.
Seed Sample	Sample containing <i>Cryptosporidium</i> oocysts and/or <i>Giardia</i> cysts in various doses, prior to dispensing into the PTA sample container.
Water Concentrate Sample	Final proficiency testing sample, containing <i>Cryptosporidium</i> oocysts and/or <i>Giardia</i> cysts, DWPFBW and Milli-Q™ water.
IMS	Immunomagnetic separation
DAPI	4',6-diamidino-2-phenylindole
DIC	Differential Interference Contrast (Microscopy)
IFA	Immunofluorescent Antibody
FITC	Fluorescein isothiocyanate

----- End of report -----